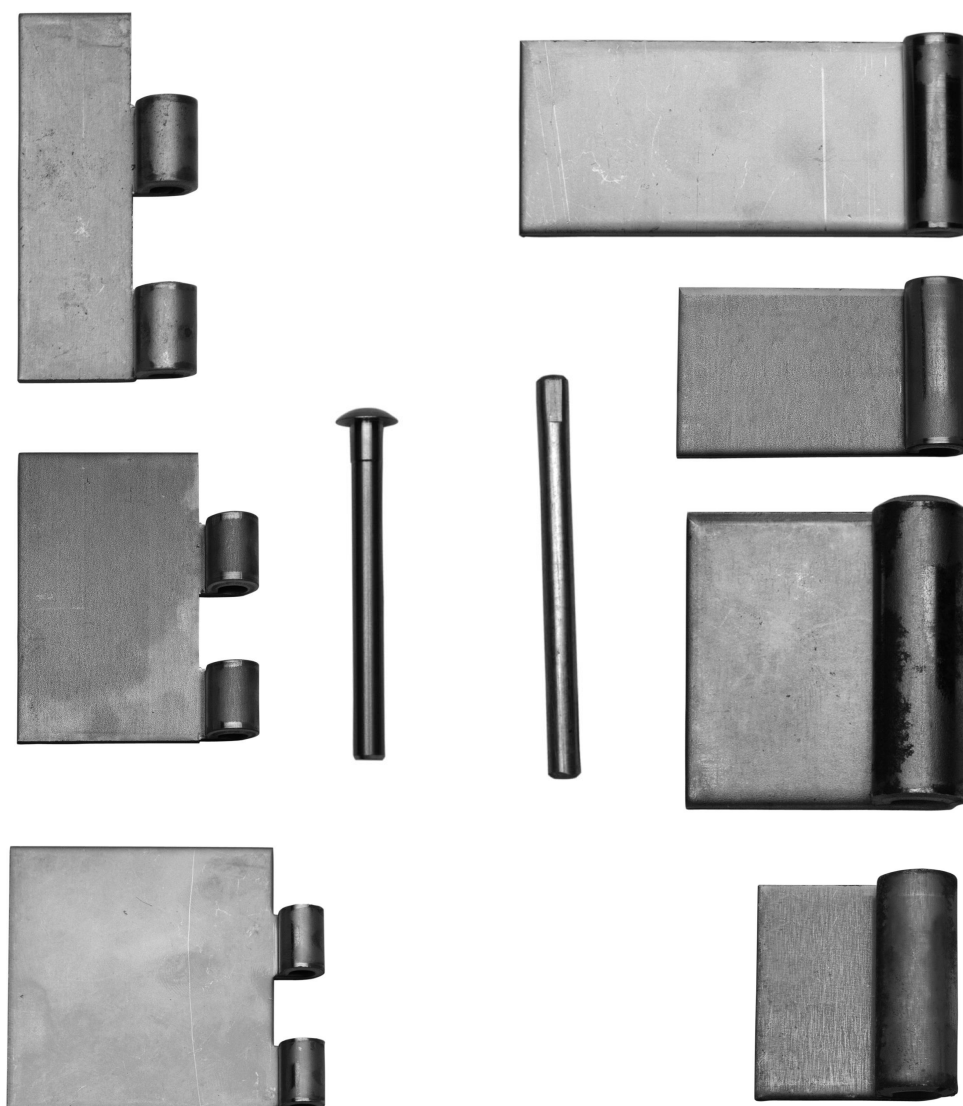




Individual parts for self made hinges



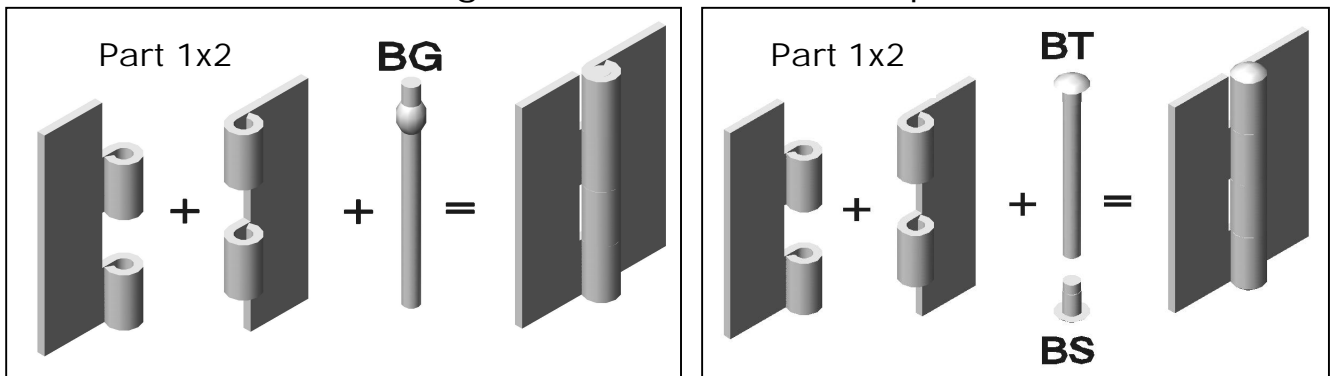


Individual parts for selfmade hinges

Materials and surface finishes:

.00	Raw steel (1.1203)
.01	Nickel-plated
.02	Brassed
.03	Chromated
.04	Zinc plated steel
.05	Bronzed
.06	Black zinc plated
.07	Blued
.08	Yellow chromated
.09	EPD (Electrophoretic deposition)
.10	Anodized silver-coloured
.30	Raw stainless steel (1.4301)
.33	Polished stainless steel
.35	Raw stainless steel (1.4401)

Hinge combinations - example



- BG jolted pin
- BT pin with head
- BS plug

Ordering example:

Art.no. 6110 . 04/30

Drilling and assembly on request.

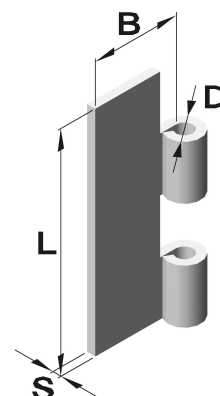
Material (steel / stainless steel)

Hinge series/ pin series

Individual parts for self made hinges

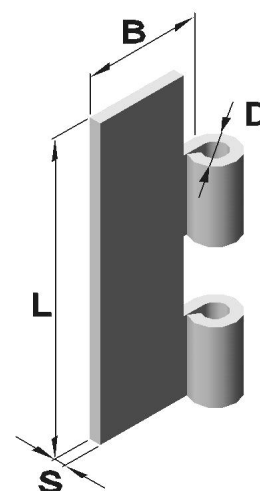
Hinge module 3 mm

Article no.			Dimensions in mm				
Series	Material		L	B	S	Pin Ø	D
	Raw						
	Steel	Stainless steel					
6110	.00	-	80	30	3	6	12
6111	-	.30	80	30	3	6	12
6112	.00	-	80	40	3	6	12
6113	-	.30	80	40	3	6	12
6114	.00	-	80	50	3	6	12
6115	-	.30	80	50	3	6	12
6116	.00	-	80	60	3	6	12
6117	-	.30	80	60	3	6	12
6118	.00	-	80	80	3	6	12
6119	-	.30	80	80	3	6	12



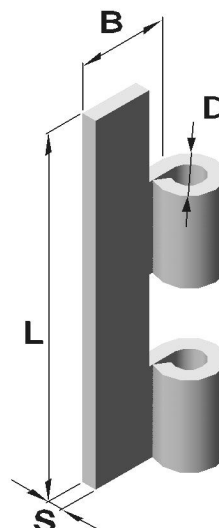
Hinge module 4 mm

Article no.			Dimensions in mm				
Series	Material		L	B	S	Pin Ø	D
	Raw						
	Steel	Stainless steel					
6130	.00	-	100	30	4	8	16
6131	-	.30	100	30	4	8	16
6132	.00	-	100	40	4	8	16
6133	-	.30	100	40	4	8	16
6134	.00	-	100	50	4	8	16
6135	-	.30	100	50	4	8	16
6136	.00	-	100	60	4	8	16
6137	-	.30	100	60	4	8	16
6138	.00	-	100	80	4	8	16
6139	-	.30	100	80	4	8	16



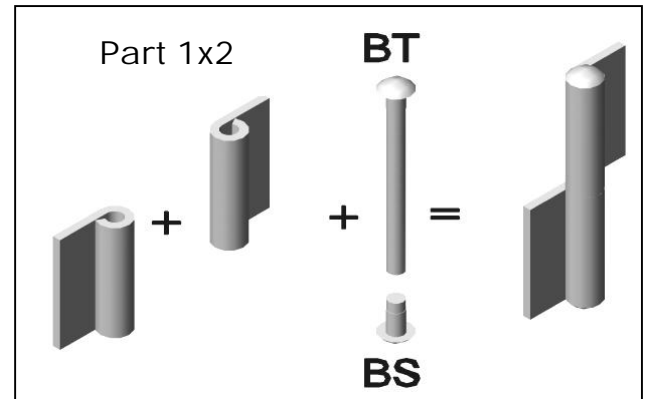
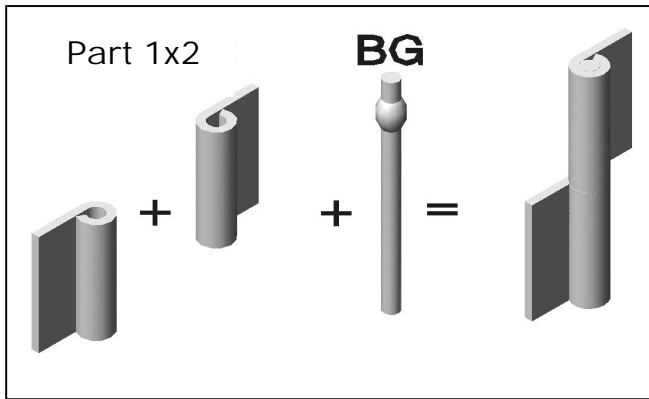
Hinge module 5 mm

Article no.			Dimensions				
Series	Material		L	B	S	Pin Ø	D
	Raw						
	Steel	Stainless steel					
6149	.00	-	120	30	5	10	20
6140	-	.30	120	30	5	10	20
6141	.00	-	120	40	5	10	20
6142	-	.30	120	40	5	10	20
6143	.00	-	120	50	5	10	20
6144	-	.30	120	50	5	10	20
6145	.00	-	120	60	5	10	20
6146	-	.30	120	60	5	10	20
6147	.00	-	120	80	5	10	20
6148	-	.30	120	80	5	10	20



Individual parts for self made hinges

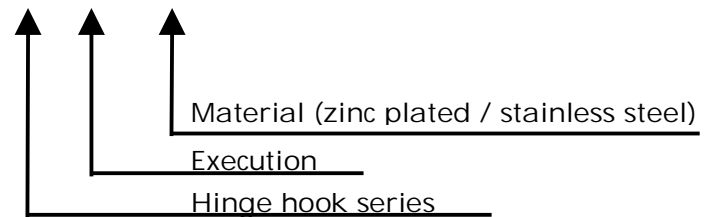
Hinge hook combinations - example



- BG joled pin
- BT pin with head
- BS plug

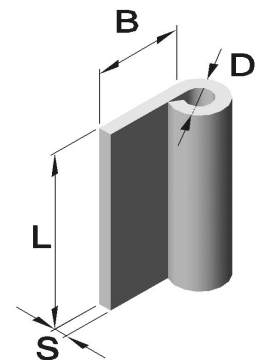
Ordering example:
Art.no. 6210. 01. 04/30

Drilling and assembly on request.



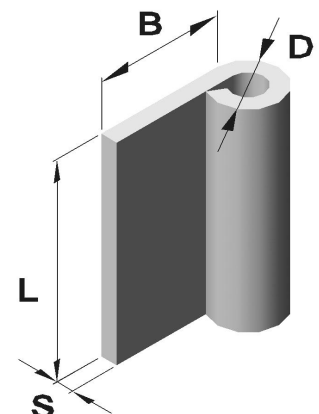
Hinge hook module 3 mm

Article no.				Dimensions in mm				
Series	Execution	Material		L	B	S	Pin Ø	D
		Raw						
		Steel	Stainless steel					
6210	.01	.00	.30	40	20	3	6	12
6210	.03	.00	.30	40	30	3	6	12
6210	.05	.00	.30	40	50	3	6	12
6210	.07	.00	.30	40	80	3	6	12
6210	.09	.00	.30	40	120	3	6	12



Hinge hook module 4 mm

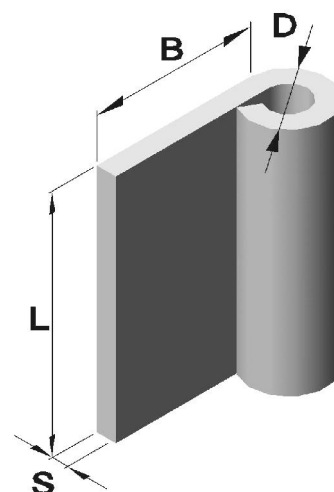
Article no.				Dimensions in mm				
Series	Execution	Material		L	B	S	Pin Ø	D
		Raw						
		Steel	Stainless steel					
6210	.21	.00	.30	50	30	4	8	16
6210	.23	.00	.30	50	50	4	8	16
6210	.25	.00	.30	50	80	4	8	16



Individual parts for self made hinges

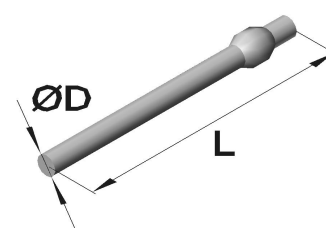
Hinge hook module 5 mm

Article no.				Dimensions in mm				
Series	Execution	Material		L	B	S	Pin Ø	D
		Raw						
		Steel	Stainless steel					
6210	.31	.00	.30	60	40	5	10	20
6210	.33	.00	.30	60	60	5	10	20
6210	.35	.00	.30	60	80	5	10	20



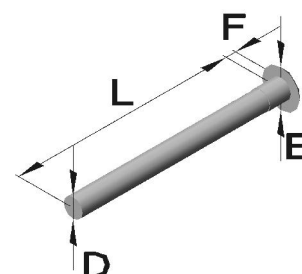
Pin „BG “ - jolted

Article no.			Dimensions in mm	
Series	Material		L	D Ø
	Zinc plated	Raw		
	Steel	Stainless steel		
6150	.04	-	80	6
6151	-	.30	80	6
6152	.04	-	100	8
6153	-	.30	100	8
6154	.04	-	120	10
6155	-	.30	120	10



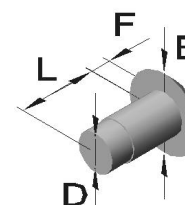
Pin „BT “ - with head

Article no.			Dimensions in mm			
Series	Material		D Ø	L	F	E
	Zinc plated	Raw				
	Steel	Stainless steel				
6160	.04	-	6	66	3	12
6161	-	.30	6	66	3	12
6162	.04	-	8	86	4	16
6163	-	.30	8	86	4	16
6164	.04	-	10	106	5	20
6165	-	.30	10	106	5	20



Plug „BS “ - with head

Article no.			Dimensions in mm			
Series	Material		D Ø	L	F	E
	Zinc plated	Raw				
	Steel	Stainless steel				
6170	.04	-	6	12	3	12
6171	-	.30	6	12	3	12
6172	.04	-	8	12	4	16
6173	-	.30	8	12	4	16
6174	.04	-	10	12	5	20
6175	-	.30	10	12	5	20



Individual parts for self made hinges



Management
System
ISO 14001:2015
www.tuv.com
ID: 9108624624

Phone:
Fax:
Email:
Homepage:

+49 (0) 231 / 725 790 -0
+49 (0) 231 / 725 790 -10
info@hokon-verschlusstechnik.de
www.hokon-verschlusstechnik.de